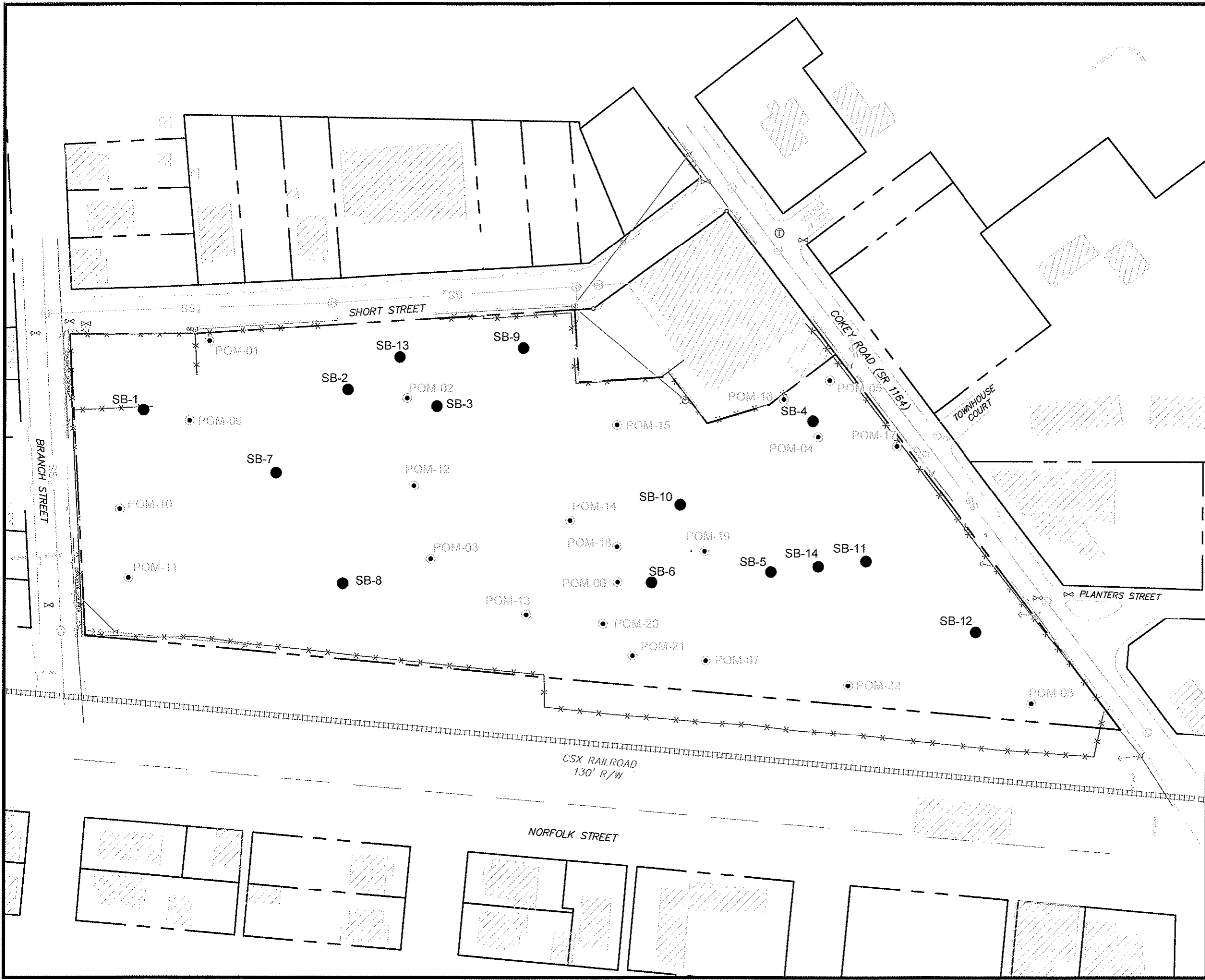


S:\AA-Master Projects\City of Rocky Mount - CRM\CRM-008 - CRM\CRM-008 Site Base 05192011.dwg, Canon IR C4080C4580 UFR II

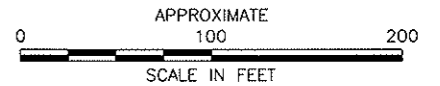



**LEGEND**

- SITE PROPERTY BOUNDARY
- ⊕ TYPE II MONITORING WELL
- ⊙ DEEP TYPE II MONITORING WELL
- DEEP TYPE III MONITORING WELL

**NOTES**  
 1. MONITORING WELL LOCATIONS FROM SITE SURVEY CONDUCTED BY JOYNER-KEENEY, PLLC ON MARCH 29, 2011.  
 2. BORING LOCATIONS FROM SITE STAKEOUT PERFORMED BY JOYNER-KEENEY, PLLC, DECEMBER 7, 2010.

REFERENCE: BOUNDARY AND TOPOGRAPHIC MAP OF PLANTERS OIL MILL SITE, ROCKY MOUNT, NC, PREPARED BY JOYNER-KEENEY, PLLC, PLANNING & LAND SURVEYING, APRIL 15, 2010.



TITLE <b>BSOIL BORING LOCATIONS</b>	
PROJECT <b>FORMER PLANTERS OIL MILL SITE 1004 COKEY ROAD ROCKY MOUNT, EDGECOMBE COUNTY, NC</b>	
 <b>Hart &amp; Hickman</b> <small>A PROFESSIONAL CORPORATION</small>	
<small>3334 Hillsborough Street          Raleigh, North Carolina 27607          919-847-4241(p) 919-847-4261(f)          License # C-1269 / #C-245 Geology</small>	
DATE: 05/19/2011	REVISION NO. 0
JOB NO. CRM-008	FIGURE NO. 4



# BORING NUMBER SB-1 / MW-1

2923 South Tryon Street-Suite 100  
Charlotte, North Carolina 28203  
704-586-0007(p) 704-586-0373(f)

3334 Hillsborough Street  
Raleigh, North Carolina 27607  
919-847-4241(p) 919-847-4261(f)

**PROJECT:** Former Planters Oil Mill

**JOB NUMBER:** CRM-008

**LOCATION:** 1004 Cokey Rd., Rocky Mount, NC

DEPTH (ft)	RECOVERY (%)	SAMPLE TYPE NUMBER	OVA (ppm)		LITHOLOGY	MATERIAL DESCRIPTION	BORING DIAGRAM	DEPTH (ft)
			BKG.	SAMP.				
0						Moist, Brown, Fine Silty SAND (Loam)	<p>CONCRETE Concrete Grout Bentonite Seal #2 Well Sand</p>	0
		GB	0	0		Moist, Tan & Orange, Fine Sandy CLAY Moist, As Above		
5		GB	0	0		Moist, Gray, Fine Sandy CLAY		5
			0	0		Damp to Wet, Tan & Gray, Medium Clayey SAND		
10			0	0		Wet, Gray, Medium Silty SAND		10
			0	0		Wet, Gray & White, Medium Silty SAND		
20			0	0		Bottom of borehole at 20.0 feet.	20	
25							25	

BORING LOG - HART HICKMAN.GDT - 3/28/11 16:14 - S:\AAA-MASTER GINT PROJECTS\CRM-008 RDI BORINGS 03-2011.GPJ

**DRILLING CONTRACTOR:** Quantex  
**DRILL RIG/ METHOD:** 6620DT / Direct Push  
**SAMPLING METHOD:** DPT Sleeves  
**LOGGED BY:** KBB  
**DRAWN BY:** KBB

**BORING STARTED:** 3/21/11  
**BORING COMPLETED:** 3/21/11  
**TOTAL DEPTH:** 20 ft.  
**TOP OF CASING ELEV:** 0 ft.  
**DEPTH TO WATER:**

**Remarks:**  
Completed as 1" Dia. Monitoring Well MW-1



# BORING NUMBER SB-2 / MW-2

2923 South Tryon Street-Suite 100  
Charlotte, North Carolina 28203  
704-586-0007(p) 704-586-0373(f)

3334 Hillsborough Street  
Raleigh, North Carolina 27607  
919-847-4241(p) 919-847-4261(f)

**PROJECT:** Former Planters Oil Mill

**JOB NUMBER:** CRM-008

**LOCATION:** 1004 Cokey Rd., Rocky Mount, NC

DEPTH (ft)	RECOVERY (%)	SAMPLE TYPE NUMBER	OVA (ppm)		LITHOLOGY	MATERIAL DESCRIPTION	BORING DIAGRAM	DEPTH (ft)
			BKG.	SAMP.				
0						Moist, Brown & Black, Fine Silty SAND (Loam)	<p>CONCRETE Concrete Grout Bentonite Seal</p>	0
		GB	0		Moist, Gray, Fine Sandy CLAY			
			0		Moist, Gray & Black, Fine Sandy CLAY			
5		GB	466		Moist to Damp, Dark Gray Fine Sandy CLAY			5
			380		Wet, Gray & Green, Medium Silty SAND			
10					Wet, Tan & Gray, Medium Silty SAND	<p>#2 Well Sand</p>	10	
20					Bottom of borehole at 20.0 feet.			20
25							25	

**DRILLING CONTRACTOR:** Quantex  
**DRILL RIG/ METHOD:** 6620DT / Direct Push  
**SAMPLING METHOD:** DPT Sieves  
**LOGGED BY:** KBB  
**DRAWN BY:** KBB

**BORING STARTED:** 3/21/11  
**BORING COMPLETED:** 3/21/11  
**TOTAL DEPTH:** 20 ft.  
**TOP OF CASING ELEV:** 0 ft.  
**DEPTH TO WATER:**

**Remarks:**  
Completed as 1" Dia. Monitoring Well MW-2

BORING LOG - HART-HICKMAN.GDT - 3/28/11 16:14 - S:\AAA-MASTER GINT PROJECTS\CRM-008.RDI.BORINGS 03-2011.GPJ



# BORING NUMBER SB-3 / MW-3

2923 South Tryon Street-Suite 100  
 Charlotte, North Carolina 28203  
 704-586-0007(p) 704-586-0373(f)

3334 Hillsborough Street  
 Raleigh, North Carolina 27607  
 919-847-4241(p) 919-847-4261(f)

**PROJECT:** Former Planters Oil Mill

**JOB NUMBER:** CRM-008

**LOCATION:** 1004 Cokey Rd., Rocky Mount, NC

DEPTH (ft)	RECOVERY (%)	SAMPLE TYPE NUMBER	OVA (ppm)		LITHOLOGY	MATERIAL DESCRIPTION	BORING DIAGRAM	DEPTH (ft)
			BKG.	SAMP.				
0						Moist, Dark Brown, Fine Silty SAND (Loam)	CONCRETE Concrete Grout	0
		GB		0		Moist, Gray, Fine Sandy CLAY	Bentonite Seal	
				9		Moist, As Above		
5		GB		168		Moist, Gray, Medium Clayey SAND		5
				181		Damp to Wet, As Above		
				214		Wet, Gray, Medium Silty SAND		
10							#2 Well Sand	10
						Moist, Orange & Tan, Fine Sandy CLAY		
15						Wet, Gray, Medium Silty SAND		15
20						Bottom of borehole at 20.0 feet.		20
25								25

BORING LOG - HART HICKMAN.GDT - 3/28/11 16:14 - S:\AAA-MASTER.GINT\PROJECTS\CRM-008 RDI BORINGS 03-2011.GPJ

**DRILLING CONTRACTOR:** Quantex  
**DRILL RIG/ METHOD:** 6620DT / Direct Push  
**SAMPLING METHOD:** DPT Steeves  
**LOGGED BY:** KBB  
**DRAWN BY:** KBB

**BORING STARTED:** 3/21/11  
**BORING COMPLETED:** 3/21/11  
**TOTAL DEPTH:** 20 ft.  
**TOP OF CASING ELEV:** 0 ft.  
**DEPTH TO WATER:**

**Remarks:**  
 Completed as 1" Dia. Monitoring Well MW-3



# BORING NUMBER SB-4 / MW-4

2923 South Tryon Street-Suite 100  
Charlotte, North Carolina 28203  
704-586-0007(p) 704-586-0373(f)

3334 Hillsborough Street  
Raleigh, North Carolina 27607  
919-847-4241(p) 919-847-4261(f)

**PROJECT:** Former Planters Oil Mill

**JOB NUMBER:** CRM-008

**LOCATION:** 1004 Cokey Rd., Rocky Mount, NC

DEPTH (ft)	RECOVERY (%)	SAMPLE TYPE NUMBER	OVA (ppm)		LITHOLOGY	MATERIAL DESCRIPTION	BORING DIAGRAM	DEPTH (ft)
			BKG.	SAMP.				
0		GB				Moist, Dark Brown, Fine Silty SAND		0
					No Recovery			5
					Moist to Damp, Gray, Medium Sandy CLAY			5
					Damp to Wet, As Above			10
					Wet, Gray & Tan, Medium Silty SAND			15
					Saturated, White, Medium Silty SAND		20	
20					Bottom of borehole at 20.0 feet.			20
25								25

BORING LOG - HART HICKMAN.GDT - 3/28/11 16:14 - S:\AAA-MASTER GINT PROJECTS\CRM-008 RDI BORINGS 03-2011.GPJ

**DRILLING CONTRACTOR:** Quantex  
**DRILL RIG/ METHOD:** 6620DT / Direct Push  
**SAMPLING METHOD:** DPT Sleeves  
**LOGGED BY:** KBB  
**DRAWN BY:** KBB

**BORING STARTED:** 3/21/11  
**BORING COMPLETED:** 3/21/11  
**TOTAL DEPTH:** 20 ft.  
**TOP OF CASING ELEV:** 0 ft.  
**DEPTH TO WATER:**

**Remarks:**  
 Completed as 1" Dia. Monitoring Well MW-4



# BORING NUMBER SB-5 / MW-5

2923 South Tryon Street-Suite 100  
Charlotte, North Carolina 28203  
704-596-0007(p) 704-596-0373(f)

3334 Hillsborough Street  
Raleigh, North Carolina 27607  
919-847-4241(p) 919-847-4261(f)

**PROJECT:** Former Planters Oil Mill

**JOB NUMBER:** CRM-008

**LOCATION:** 1004 Cokey Rd., Rocky Mount, NC

DEPTH (ft)	RECOVERY (%)	SAMPLE TYPE NUMBER	OVA (ppm)		LITHOLOGY	MATERIAL DESCRIPTION	BORING DIAGRAM	DEPTH (ft)
			BKG.	SAMP.				
0						Moist, Black, Fine Silty SAND	<p>CONCRETE Grout</p> <p>Bentonite Seal</p> <p>#2 Well Sand</p>	0
		GB	0	0	Moist, Orange, Fine Silty SAND			
			0	0	Moist, Gray & Brown, Fine Clayey SAND			
					Moist, As Above			
			0		Moist, As Above			
5		GB	0	0	Moist to Damp, As Above			
			0		Wet, As Above			
					Moist, Orange & Gray, Fine Sandy CLAY			
					Wet, Gray, Silty SAND			
15					Moist, Gray & Orange, Fine Sandy CLAY			
					Bottom of borehole at 20.0 feet.			
20								20
25								25

BORING LOG - HART HICKMAN.GDT - 3/28/11 16:14 - S:\AAA-MASTER GINT PROJECTS\CRM-008 RDI BORINGS 03-2011.GPJ

**DRILLING CONTRACTOR:** Quantex  
**DRILL RIG/ METHOD:** 6620DT / Direct Push  
**SAMPLING METHOD:** DPT Sleeves  
**LOGGED BY:** KBB  
**DRAWN BY:** KBB

**BORING STARTED:** 3/21/11  
**BORING COMPLETED:** 3/21/11  
**TOTAL DEPTH:** 20 ft.  
**TOP OF CASING ELEV:** 0 ft.  
**DEPTH TO WATER:**

**Remarks:**  
Completed as 1" Dia. Monitoring Well MW-5



# BORING NUMBER SB-10

2923 South Tryon Street-Suite 100  
 Charlotte, North Carolina 28203  
 704-586-0007(p) 704-586-0373(f)

3334 Hillsborough Street  
 Raleigh, North Carolina 27607  
 919-847-4241(p) 919-847-4261(f)

**PROJECT:** Former Planters Oil Mill

**JOB NUMBER:** CRM-008

**LOCATION:** 1004 Cokey Rd., Rocky Mount, NC

DEPTH (ft)	RECOVERY (%)	SAMPLE TYPE NUMBER	OVA (ppm)		LITHOLOGY	MATERIAL DESCRIPTION	BORING DIAGRAM	DEPTH (ft)
			BKG.	SAMP.				
0.0						Moist, Black & Gray, Fine Silty SAND (Loam)		0.0
				0		Moist, As Above		
		GB		0		Bottom of borehole at 2.0 feet.		
2.5								2.5
5.0								5.0
7.5								7.5
10.0								10.0

BORING LOG - HART HICKMAN.GDT - 3/28/11 16:14 - S:\AAA-MASTER GINT PROJECTS\CRM-008 RDI BORINGS 03-2011.GPJ

**DRILLING CONTRACTOR:** Quantex  
**DRILL RIG/ METHOD:** 6620DT / Direct Push  
**SAMPLING METHOD:** DPT Sleeves  
**LOGGED BY:** KBB  
**DRAWN BY:** KBB

**BORING STARTED:** 3/21/11  
**BORING COMPLETED:** 3/21/11  
**TOTAL DEPTH:** 2 ft.  
**TOP OF CASING ELEV:**  
**DEPTH TO WATER:**

**Remarks:**



# BORING NUMBER SB-11

2923 South Tryon Street-Suite 100  
 Charlotte, North Carolina 28203  
 704-586-0007(p) 704-586-0373(f)

3334 Hillsborough Street  
 Raleigh, North Carolina 27607  
 919-847-4241(p) 919-847-4261(f)

**PROJECT:** Former Planters Oil Mill

**JOB NUMBER:** CRM-008

**LOCATION:** 1004 Cokey Rd., Rocky Mount, NC

DEPTH (ft)	RECOVERY (%)	SAMPLE TYPE NUMBER	OVA (ppm)		LITHOLOGY	MATERIAL DESCRIPTION	BORING DIAGRAM	DEPTH (ft)
			BKG.	SAMP.				
0.0						Asphalt		0.0
						Moist, Brown & Tan, Fine Clayey SAND		
				0		Moist, As Above		
		GB		0		Bottom of borehole at 2.0 feet.		
2.5								2.5
5.0								5.0
7.5								7.5
10.0								10.0

BORING LOG - HART HICKMAN GDT - 3/28/11 16:14 - S:\AAA-MASTER GINT PROJECTS\CRM-008 RDI BORINGS 03-2011.GPJ

**DRILLING CONTRACTOR:** Quantex  
**DRILL RIG/ METHOD:** 6620DT / Direct Push  
**SAMPLING METHOD:** DPT Sleeves  
**LOGGED BY:** KBB  
**DRAWN BY:** KBB

**BORING STARTED:** 3/21/11  
**BORING COMPLETED:** 3/21/11  
**TOTAL DEPTH:** 2 ft.  
**TOP OF CASING ELEV:**  
**DEPTH TO WATER:**

**Remarks:**



# BORING NUMBER SB-12

2923 South Tryon Street-Suite 100  
Charlotte, North Carolina 28203  
704-586-0007(p) 704-586-0373(f)

3334 Hillsborough Street  
Raleigh, North Carolina 27607  
919-847-4241(p) 919-847-4261(f)

**PROJECT:** Former Planters Oil Mill

**JOB NUMBER:** CRM-008

**LOCATION:** 1004 Cokey Rd., Rocky Mount, NC

DEPTH (ft)	RECOVERY (%)	SAMPLE TYPE NUMBER	OVA (ppm)		LITHOLOGY	MATERIAL DESCRIPTION	BORING DIAGRAM	DEPTH (ft)
			BKG.	SAMP.				
0.0						Moist, Tan, Fine Silty SAND		0.0
				0	Brick Debris			
				0	Moist, Tan, Fine Silty Clayey SAND			
		GB		0		Bottom of borehole at 2.0 feet.		
2.5								2.5
5.0								5.0
7.5								7.5
10.0								10.0

**DRILLING CONTRACTOR:** Quantex  
**DRILL RIG/ METHOD:** 6620DT / Direct Push  
**SAMPLING METHOD:** DPT Sleeves  
**LOGGED BY:** KBB  
**DRAWN BY:** KBB

**BORING STARTED:** 3/21/11  
**BORING COMPLETED:** 3/21/11  
**TOTAL DEPTH:** 2 ft.  
**TOP OF CASING ELEV:**  
**DEPTH TO WATER:**

Remarks:



# BORING NUMBER SB-13

2923 South Tryon Street-Suite 100  
Charlotte, North Carolina 28203  
704-586-0007(p) 704-586-0373(f)

3334 Hillsborough Street  
Raleigh, North Carolina 27607  
919-847-4241(p) 919-847-4261(f)

**PROJECT:** Former Planters Oil Mill

**JOB NUMBER:** CRM-008

**LOCATION:** 1004 Cokey Rd., Rocky Mount, NC

DEPTH (ft)	RECOVERY (%)	SAMPLE TYPE NUMBER	OVA (ppm)		LITHOLOGY	MATERIAL DESCRIPTION	BORING DIAGRAM	DEPTH (ft)
			BKG.	SAMP.				
0.0						Gravel Fill		0.0
						Dry, Tan, Fine Sandy Clay		
				0		Dry, As Above		
		GB		0		Bottom of borehole at 2.0 feet.		
2.5								2.5
5.0								5.0
7.5								7.5
10.0								10.0

**DRILLING CONTRACTOR:** Quantex  
**DRILL RIG/ METHOD:** 6620DT / Direct Push  
**SAMPLING METHOD:** DPT Sleeves  
**LOGGED BY:** KBB  
**DRAWN BY:** KBB

**BORING STARTED:** 3/21/11  
**BORING COMPLETED:** 3/21/11  
**TOTAL DEPTH:** 2 ft.  
**TOP OF CASING ELEV:**  
**DEPTH TO WATER:**

**Remarks:**



# BORING NUMBER SB-14

2923 South Tryon Street-Suite 100  
Charlotte, North Carolina 28203  
704-586-0007(p) 704-586-0373(f)

3331 Hillsborough Street  
Raleigh, North Carolina 27607  
919-847-4241(p) 919-847-4261(f)

**PROJECT:** Former Planters Oil Mill

**JOB NUMBER:** CRM-008

**LOCATION:** 1004 Cokey Rd., Rocky Mount, NC

DEPTH (ft)	RECOVERY (%)	SAMPLE TYPE NUMBER	OVA (ppm)		LITHOLOGY	MATERIAL DESCRIPTION	BORING DIAGRAM	DEPTH (ft)
			BKG.	SAMP.				
0.0						Moist, Brown, Fine Silty SAND		0.0
				0		Brick Debris		
		GB		0		Moist, Tan & Orange, Medium Sandy CLAY		
2.5				0		Moist, As Above		2.5
				0		Moist, Orange & Brown, Medium Sandy CLAY		
5.0				0		Moist, As Above		5.0
		GB		0		Bottom of borehole at 6.0 feet.		
7.5								7.5
10.0								10.0

BORING LOG - HART HICKMAN.GDT - 3/28/11 16:14 - S:\AAA-MASTER GINT PROJECTS\CRM-008 RDI BORINGS 03-2011.GPJ

**DRILLING CONTRACTOR:** Quantex  
**DRILL RIG/ METHOD:** 6620DT / Direct Push  
**SAMPLING METHOD:** DPT Sleeves  
**LOGGED BY:** KBB  
**DRAWN BY:** KBB

**BORING STARTED:** 3/21/11  
**BORING COMPLETED:** 3/21/11  
**TOTAL DEPTH:** 6 ft.  
**TOP OF CASING ELEV:**  
**DEPTH TO WATER:**

**Remarks:**



# BORING NUMBER SB-6

2923 South Tryon Street-Suite 100  
Charlotte, North Carolina 28203  
704-586-0007(p) 704-586-0373(f)

3334 Hillsborough Street  
Raleigh, North Carolina 27607  
919-847-4241(p) 919-847-4261(f)

**PROJECT:** Former Planters Oil Mill

**JOB NUMBER:** CRM-008

**LOCATION:** 1004 Cokey Rd., Rocky Mount, NC

DEPTH (ft)	RECOVERY (%)	SAMPLE TYPE NUMBER	OVA (ppm)		LITHOLOGY	MATERIAL DESCRIPTION	BORING DIAGRAM	DEPTH (ft)
			BKG.	SAMP.				
0.0						Moist, Brown, Fine Silty SAND (Loam)		0.0
		GB		0		Moist, Gray, Fine Clayey SAND		
2.5				0		Moist, As Above		2.5
				0		Moist, As Above		
5.0				0		Moist, As Above		5.0
		GB		0		Bottom of borehole at 6.0 feet.		
7.5								7.5
10.0								10.0

**DRILLING CONTRACTOR:** Quantex  
**DRILL RIG/ METHOD:** 6620DT / Direct Push  
**SAMPLING METHOD:** DPT Sleeves  
**LOGGED BY:** KBB  
**DRAWN BY:** KBB

**BORING STARTED:** 3/21/11  
**BORING COMPLETED:** 3/21/11  
**TOTAL DEPTH:** 6 ft.  
**TOP OF CASING ELEV:**  
**DEPTH TO WATER:**

**Remarks:**



# BORING NUMBER SB-7

2923 South Tryon Street-Suite 100  
Charlotte, North Carolina 28203  
704-586-0007(p) 704-586-0373(f)

3334 Hillsborough Street  
Raleigh, North Carolina 27607  
919-847-4241(p) 919-847-4261(f)

**PROJECT:** Former Planters Oil Mill

**JOB NUMBER:** CRM-008

**LOCATION:** 1004 Cokey Rd., Rocky Mount, NC

DEPTH (ft)	RECOVERY (%)	SAMPLE TYPE NUMBER	OVA (ppm)		LITHOLOGY	MATERIAL DESCRIPTION	BORING DIAGRAM	DEPTH (ft)
			BKG.	SAMP.				
0.0						Dry, Brown & Tan, Medium Clayey SAND		0.0
2.5		GB		0		Bottom of borehole at 2.0 feet.		2.5
5.0								5.0
7.5								7.5
10.0								10.0

BORING LOG - HART HICKMAN.GDT - 3/28/11 16:14 - S:\AAA-MASTER GINT PROJECTS\CRM-008 RDI BORINGS 03-2011.GPJ

**DRILLING CONTRACTOR:** Quantex  
**DRILL RIG/ METHOD:** 6620DT / Direct Push  
**SAMPLING METHOD:** DPT Sleeves  
**LOGGED BY:** KBB  
**DRAWN BY:** KBB

**BORING STARTED:** 3/21/11  
**BORING COMPLETED:** 3/21/11  
**TOTAL DEPTH:** 2 ft.  
**TOP OF CASING ELEV:**  
**DEPTH TO WATER:**

**Remarks:**



# BORING NUMBER SB-8

2923 South Tryon Street-Suite 100  
 Charlotte, North Carolina 28203  
 704-586-0007(p) 704-586-0373(f)

3334 Hillsborough Street  
 Raleigh, North Carolina 27607  
 919-847-4241(p) 919-847-4261(f)

**PROJECT:** Former Planters Oil Mill

**JOB NUMBER:** CRM-008

**LOCATION:** 1004 Cokey Rd., Rocky Mount, NC

DEPTH (ft)	RECOVERY (%)	SAMPLE TYPE NUMBER	OVA (ppm)		LITHOLOGY	MATERIAL DESCRIPTION	BORING DIAGRAM	DEPTH (ft)
			BKG.	SAMP.				
0.0						Moist, Orange & Brown, Fine Sandy CLAY		0.0
2.5		GB		0		Bottom of borehole at 2.0 feet.		2.5
5.0								5.0
7.5								7.5
10.0								10.0

BORING LOG - HART HICKMAN GDT - 3/28/11 16:14 - S:\AAA-MASTER GINT PROJECTS\CRM-008 RDI BORINGS 03-2011.GPJ

**DRILLING CONTRACTOR:** Quantex  
**DRILL RIG/ METHOD:** 6620DT / Direct Push  
**SAMPLING METHOD:** DPT Sleeves  
**LOGGED BY:** KBB  
**DRAWN BY:** KBB

**BORING STARTED:** 3/21/11  
**BORING COMPLETED:** 3/21/11  
**TOTAL DEPTH:** 2 ft.  
**TOP OF CASING ELEV:**  
**DEPTH TO WATER:**

**Remarks:**



# BORING NUMBER SB-9

2923 South Tryon Street-Suite 100  
Charlotte, North Carolina 28203  
704-586-0007(p) 704-586-0373(f)

3334 Hillsborough Street  
Raleigh, North Carolina 27607  
919-847-4241(p) 919-847-4261(f)

**PROJECT:** Former Planters Oil Mill

**JOB NUMBER:** CRM-008

**LOCATION:** 1004 Cokey Rd., Rocky Mount, NC

DEPTH (ft)	RECOVERY (%)	SAMPLE TYPE NUMBER	OVA (ppm)		LITHOLOGY	MATERIAL DESCRIPTION	BORING DIAGRAM	DEPTH (ft)
			BKG.	SAMP.				
0.0						Moist, Brown, Fine Silty SAND		0.0
				0		Moist, As Above		
		GB		0		Bottom of borehole at 2.0 feet.		
2.5								2.5
5.0								5.0
7.5								7.5
10.0								10.0

**DRILLING CONTRACTOR:** Quantex  
**DRILL RIG/ METHOD:** 6620DT / Direct Push  
**SAMPLING METHOD:** DPT Sleeves  
**LOGGED BY:** KBB  
**DRAWN BY:** KBB

**BORING STARTED:** 3/21/11  
**BORING COMPLETED:** 3/21/11  
**TOTAL DEPTH:** 2 ft.  
**TOP OF CASING ELEV:**  
**DEPTH TO WATER:**

**Remarks:**