



Clarification No. 1  
Issue Date: January 28, 2011

Project Name: Area 13 Hornbeam Branch and Area 8B Church Street Sewer  
Project No.: WW019  
CRM BID #: 76029  
Bids Due Tuesday, February 1st, 2011 - 2:00 pm

**TO: Prospective Bidders**

This clarification is being issued to provide more detail regarding the 16" DIP crossing of Hornbeam Branch.

This Clarification No. # 1 consists of 2 pages including the following sketch.

**CLARIFICATIONS:**

The sanitary sewer main crossing Hornbeam Branch is to be constructed with 16" DIP Flex-Lock pipe approximately Sta 1+60 through Sta 2+00. See note 25b on the project cover sheet and the following sketch for clarification.

Mega Lug Joint Restraint fittings on each 16" DIP joint from approximate Sta 0+82 to 1+60 and Sta 2+00 to 3+43. See the note on Sheet CE-6 and the following sketch for clarification.

The cost of these materials is considered incidental and should be included in the per foot prices for the current line items.

**CHANGES TO BIDDING REQUIREMENTS:**

No Change.

**CHANGES TO CONDITIONS OF THE CONTRACT:**

No Change.

**CHANGES TO SPECIFICATIONS :**

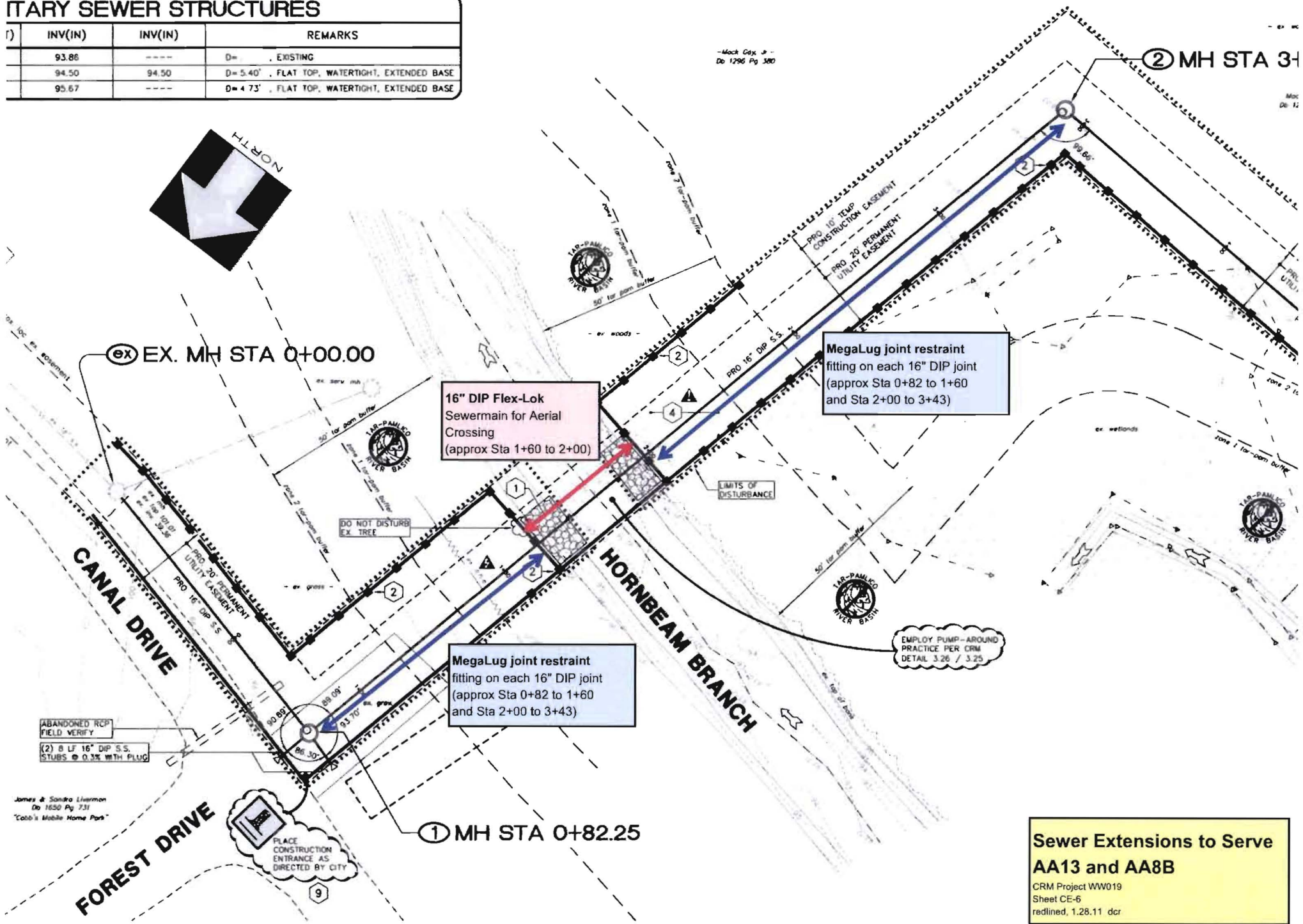
No Change

END OF CLARIFICATION

# UTILITY SEWER STRUCTURES

ID	INV(IN)	INV(IN)	REMARKS
1)	93.86	---	D= , EXISTING
	94.50	94.50	D= 5.40' , FLAT TOP, WATERTIGHT, EXTENDED BASE
	95.67	---	D= 4.73' , FLAT TOP, WATERTIGHT, EXTENDED BASE

- Mack Cox, Jr -  
 D= 1296 Pg 380



EX. MH STA 0+00.00

16" DIP Flex-Lok  
 Sewermain for Aerial  
 Crossing  
 (approx Sta 1+60 to 2+00)

MegaLug joint restraint  
 fitting on each 16" DIP joint  
 (approx Sta 0+82 to 1+60  
 and Sta 2+00 to 3+43)

MegaLug joint restraint  
 fitting on each 16" DIP joint  
 (approx Sta 0+82 to 1+60  
 and Sta 2+00 to 3+43)

MH STA 0+82.25

MH STA 3+43

ABANDONED RCP  
 FIELD VERIFY  
 (2) 8 LF 16" DIP S.S.  
 STUBS @ 0.3% WITH PLUG

PLACE CONSTRUCTION  
 ENTRANCE AS  
 DIRECTED BY CITY

EMPLOY PUMP-AROUND  
 PRACTICE PER CRM  
 DETAIL 3.26 / 3.25

James & Sandra Liverman  
 D= 1650 Pg 7.31  
 "Cobb's Mobile Home Park"

**Sewer Extensions to Serve  
 AA13 and AA8B**  
 CRM Project WW019  
 Sheet CE-6  
 redlined, 1.28.11 dcr